



**ALASKA DIVISION OF HOMELAND SECURITY &
EMERGENCY MANAGEMENT**

SITUATION REPORT 20-356 • DEC 21, 2020



Toll-Free 1.800.478.2337

Anchorage Area 907.428.7000

SEOC 907.428.7100

<p><u>SEOC Preparedness Level</u></p> <p>Level 3 - Ongoing Active Response - 2020 December Southeast Storm</p>	<p>http://ready.alaska.gov</p>	<p><u>National Terrorism Advisory System:</u></p> <p>View this site for the latest NTAS bulletin: read the current NTAS Bulletin here.</p>
<p><u>Maritime Security (MARSEC)</u></p> <p>Level:1-Minimum Appropriate Security Measures</p>	<p>WHO Novel Coronavirus Pandemic (COVID-19):</p> <p>2019 Novel Coronavirus</p>	<p><u>Alaska Military Installation Force Protection Level:</u> FPCON Bravo</p>

(Significant changes from previous situation reports are in red.)

THREAT LEVEL CHANGES:

None

Significant Issues:

SEOC remains at Level 3 supporting the transition from response to recovery operations in Haines and other Southeast communities following the December storms and to monitor a serious storm forecast for the Kenai Peninsula and Alaska's Gulf Coast.

2020 December Southeast Storm Disaster:

Haines:

The State Emergency Operations Center (SEOC) remains in regular communication with the Haines Emergency Operations Center as the community transitions from response to recovery. SEOC demobilized the deployed Haines Division Supervisor over the weekend and continues to provide support for additional geotechnical assessments and mass care operations.

Red Cross sheltered 11 survivors overnight in in non-congregate shelters, while additional survivors are housed with family, neighbors, friends. Survivor case management is underway to support survivor long-term recovery needs.

Supplemental mental health, law enforcement, and security support continue in the community.

Other Southeast Alaska Communities:

A Joint Preliminary Damage Assessment, in coordination with the Federal Emergency Management Agency, is anticipated to begin after the Christmas holiday.

Coronavirus (COVID-19) Pandemic:

A unified command has been established at the SEOC. The SEOC continues to support statewide response to COVID-19.

State of Alaska Department of Health and Social Services (DHSS)

DHSS is operating as the Medical Branch under the State EOC/Unified Command.

For more information about the outbreak refer to:

<https://covid19.alaska.gov/>

<https://www.cdc.gov/coronavirus/2019-ncov/index.html>

The Alaska DHSS website is located at <http://dhss.alaska.gov/Pages/default.aspx>

NTAS BULLETIN

To read current advisories, select the link below.

<https://www.dhs.gov/national-terrorism-advisory-system>

Travel Alerts and Conditions

COVID-19 Health Orders may affect travel. Check <https://covid19.alaska.gov/> for current Health Orders.

For current driving conditions dial 511 or link to <http://511.alaska.gov/>

Recent Earthquakes

USGS Earthquake Information: <http://earthquake.usgs.gov/>

National Tsunami Warning Center: <http://ntwc.arh.noaa.gov/>

Alaska Volcanoes

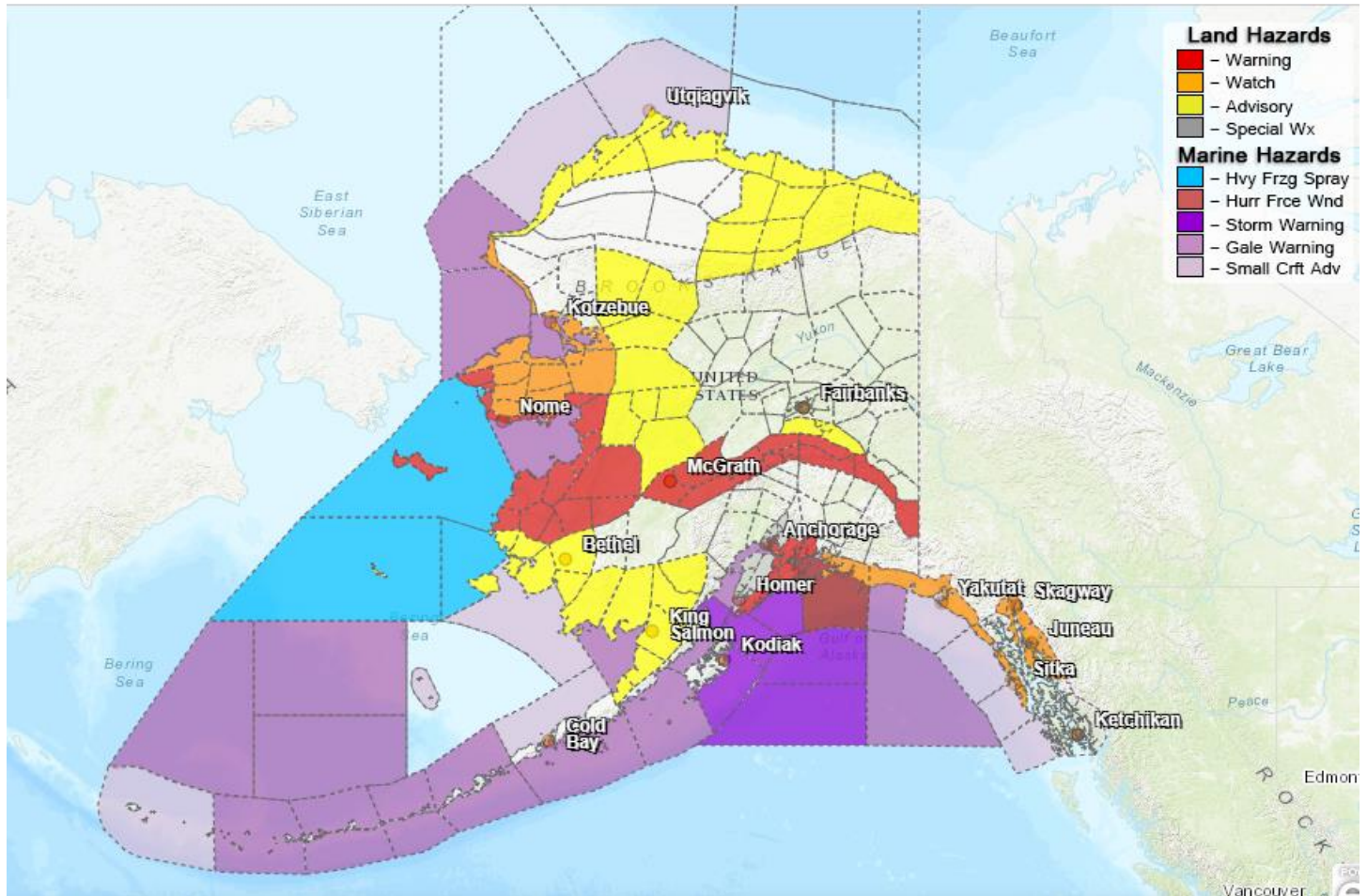
For Alaska Volcano updates, go to: <https://www.avo.alaska.edu/>

Air Quality Index (AQI) Advisories

For the most up to date Air Quality Index Advisories:

<http://dec.alaska.gov/Applications/Air/airtoolsweb/Home/Index>

Significant Weather:



A Blizzard Warning is in effect for the following areas:

- St. Lawrence Island & Bering Strait Coast until 9:00 P.M. tomorrow. Winds gusting as high as 65mph will cause widespread blowing and drifting snow, reducing visibility to one-quarter mile or less at times. Total snow accumulations of up to 5 inches are possible.
- Yukon Delta from noon today until 9:00 P.M. tomorrow. Winds gusting as high as 50mph will cause widespread blowing and drifting snow, reducing visibility to one-quarter mile or less at times. Total snow accumulations of up to 4 inches are possible.
- Western Prince William Sound from 9:00 P.M. tonight until noon tomorrow. Very heavy snow falling at rates of up to 2 inches per hour combined with winds of 40 to 65mph with gusts to 90mph could cause whiteout conditions. Total snow accumulations of 1 to 3 feet expected. The snow will change over to rain by midday Tuesday, ending the blizzard threat.

A Winter Storm Warning is in effect for the following areas:

- Eastern Norton Sound, Nulato Hills & the Lower Yukon Valley from 3:00 P.M. today until 9:00 P.M. tomorrow. Heavy blowing snow possible with total accumulations of up to 10 inches. Winds gusting to 50mph will cause areas of blowing and drifting snow.

- Southern Seward Peninsula Coast from 6:00 P.M. today until midnight Wednesday. Total snow accumulations of up to 4 inches with winds gusting as high as 55mph will cause areas of blowing and drifting snow.

A High Wind Warning is in effect for the following areas:

- Upper Kuskokwim Valley, Denali, and the Eastern Alaska Range until 3:00 P.M. tomorrow. Southern winds of 40 to 55mph with gusts to 75mph are expected in the region.
- Anchorage from 9:00 P.M. today until 6:00 P.M. tomorrow. East winds 60 to 80 mph with peak wind gusts as high as 115 mph expected for Turnagain Arm and higher elevations.
- Western Prince William Sound from 9:00 P.M. today until 6:00 P.M. tomorrow. East winds 40 to 65mph with gusts to 90mph are expected. Peak winds are expected from late Monday night through the day on Tuesday, primarily through Portage Valley. Very heavy snow will accompany the winds in many areas.

A High Wind Watch is in effect for the following areas:

- The northeast and eastern Gulf Coast including Sitka, Yakutat, Port Alexander, Elfin Cove, and Pelican until 6:00 A.M. tomorrow. Southeast winds 25 to 40 mph with gusts around 60 mph possible.
- Juneau Borough & Northern Admiralty Island until 9:00 A.M. Wednesday. Southeast winds 30 to 40 mph with gusts around 60 mph possible.
- Southeast Prince William Sound & Cordova from 3:00 P.M. tomorrow until 5:00 A.M. Wednesday. East winds 35 to 50 mph with gusts up to 75 mph possible.

A Winter Storm Watch is in effect for the following areas:

- Chukchi Sea Coast, Baldwin Peninsula, Selawik Valley, and the Northern & Interior Seward Peninsula until midnight Wednesday. Total snow accumulations of up to 5 inches are possible with winds gusting as high as 50mph will cause areas of blowing and drifting snow.
- Haines Borough, Lynn Canal, Taiya Inlet & the Klondike Highway from 3:00 P.M. today until 9:00 A.M. Wednesday. Heavy snow possible, total snow accumulations of 7 to 14 inches possible with winds gusting as high as 40mph.

A Wind Chill Advisory is in effect for the entire northern coast of Alaska until noon tomorrow. Cold air and sustained wind speeds of 15 mph or more will create low wind chills between 45 to 60 below zero across the coastal areas.

A Wind Advisory is in effect from 6:00 P.M. today until 6:00 A.M. Wednesday. Southeast winds 35 to 45mph with gusts up to 60mph are expected.

A Winter Weather Advisory is in effect for the following areas:

- Lower Koyukuk and Middle Yukon Valleys from 3:00 P.M. today until 9:00 P.M. tomorrow. Blowing snow expected with total accumulations of 4 to 7 inches are possible west of Galena.
- Bristol Bay until 6:00 P.M. today. Total snow accumulations of 6-10 inches are possible West and north of King Salmon to include Dillingham, New Stuyahok, and Koliganek.
- Kuskokwim Delta until 3:00 A.M. tomorrow. Total snow accumulations of 2 to 4 inches with amounts up to 7 inches from Toksook Bay north. Winds gusting as high as 45mph.

A Special Weather Statement is in effect for the following areas:

- Mat-Su Valley: A strong frontal system moving across Southcentral will cause winds to increase out of the Knik and Matanuska River Valleys late tonight through Tuesday morning. Gusts up to 60 mph are possible.
- Western Kenai Peninsula: Blowing snow to reduce visibilities from the Homer Bluff North to Clam Gulch Tuesday night into Wednesday. Gusty south to southwest winds are also expected at the same time as the snow.

For more information and the most current weather, Watches / Warnings / Advisories go to:

<http://www.weather.gov/arh>

Avalanche Forecast:



- Areas near Valdez, and along the Richardson Highway with Moderate risk.
- Areas near Cordova with Considerable risk
- Areas near Haines & Chilkat Pass with High risk.

Check the Avalanche Forecast Center closest to your area for the most up to date information on Avalanche potential. <https://alaskasnow.org/> or <https://www.weather.gov/afc/avalanche>

Spills of Oil and Hazardous Substances

The ADEC Spill Prevention and Response page is located at:

<http://dec.alaska.gov/spar/ppr/spill-information/response/>

Alaska Cyber Security Information

State Employees may sign up for cybersecurity notifications and alerts at

<https://oit.alaska.gov/Security>

The Next Situation Report: will be 22 December 2020. A significant change in the situation or the threat level will prompt an interim report.

This report is posted on the internet at <https://ready.alaska.gov/sitrep>. To register for email distribution, go to <http://list.state.ak.us/mailman/listinfo/dhsem.situation.report>. Direct questions regarding this report to the SEOC at 907-428-7100 or seoc@alaska.gov.